

# P R O F I L E



## EDITORIAL

The Association of Regions of the Czech Republic – founded in 2001 – is an interest group of legal entities from all 13 Czech and Moravian regions and the capital City of Prague.

Its mission is to safeguard the common interests of the member organizations, which means looking after the all-round development in the territory of each region and the needs of its citizens. It provides services to regional self-governments, ranging from lobbying for their interests with Parliament, the central government and European institutions to providing support for their international activities or assistance to the members of the Czech national delegation on the Committee of the Regions in Brussels.

Since its foundation, the Association of Regions has gained significant influence on political and societal events and supports the common interests and rights of the regions united under the association in compliance with the principles of the European Charter of Local Self-Government.



# ASSOCIATION



Responsibility, solidarity and a focus on solving the shared problems of citizens in the regions comprise the main priorities which contribute to the important position of **the Association of Regions** in the governance structure of **the Czech Republic**.

The Association of Regions of the Czech Republic is active in all decision-making processes that have an impact on Czech and Moravian regions and acts as a watchdog for their rightful position within the public administration structure of the Czech Republic. The Association is a stable partner of the Czech government and the Parliament. The Association supports international cooperation, above all in terms of economic diplomacy focused on development of regions. An integral part of the Association's activities is cooperation with professional and special interest associations and groupings.

The Association helps to tackle crises and contributes to finding solutions in cases of, for example, response to natural disasters or human-caused accidents or simply any situation which negatively influences the lives of citizens in the regions.

The Association of Regions provides administrative and expert services covering the needs of the Board of the Association of Regions through thematic advisory committees which take into account and evaluate various suggestions and initiatives stemming from the regions and which elaborate policy concepts. These materials serve as guidance for the Association in taking positions and standpoints towards many professional topics that must be dealt with.

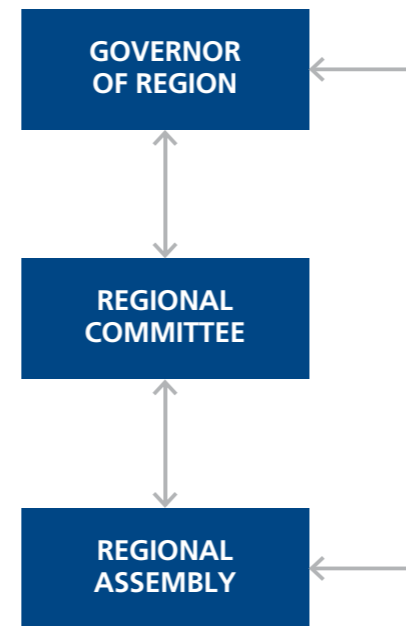


# REGION

The Czech Republic follows the principle of **representative democracy** in which citizens elect politicians by public vote, who then run the regions.

A region is a territorial unit smaller than the state and bigger than a district, town or municipality. Regions, as the second tier of local self-government and public sector incorporation, came into being on 1 January 2000 and their main body is the Regional Assembly. Members of the Regional Assembly are elected for a term of 4 years by the citizens of the respective region. The Governor of the Region (called hejtman in Czech) represents the region and the Regional Council (rada kraje) is constituted from members of the Regional Assembly. The number of members elected to the Regional Assembly depends on the the number of inhabitants: in regions with a population of up to 600 000 there are 45 Regional Assembly members, from 600 000 to 900 000 inhabitants 55 elected members, and over 900 000 inhabitants 64 elected members of the Regional Assembly.

The Regional Assembly is entitled to take decisions on matters of self governance such as the budget, asset management, drawing up policies and strategies for development of the region and provision of grants and subsidies. In matters of so-called delegated powers from the state it has the mandate to decide only in cases where the law so stipulates explicitly, for example in the sphere of managing the integrated rescue system, administration of territorial planning, construction codes, heritage management and the education and social care systems. The Assembly is entitled to propose new legislative acts and laws to the Parliament of the Czech Republic.



<b>1 City of Prague</b> Statutory city: Prague No. of representatives: 63 Population: 1 246 240 Area: 496 km <sup>2</sup>	<b>4 Ústí Region</b> Statutory city: Ústí nad Labem No. of representatives: 55 Population: 830 371 Area: 5 335 km <sup>2</sup>	<b>7 South Bohemia Region</b> Statutory city: Czech Budejovice No. of representatives: 55 Population: 636 611 Area: 10 056 km <sup>2</sup>	<b>10 Hradec Králové Region</b> Statutory city: Hradec Králové No. of representatives: 45 Population: 552 946 Area: 4 759 km <sup>2</sup>	<b>13 Zlín Region</b> Statutory city: Zlín No. of representatives: 45 Population: 587 693 Area: 3 963 km <sup>2</sup>
<b>2 Central Bohemia Region</b> Statutory city: Prague No. of representatives: 65 Population: 1 273 094 Area: 11 016 km <sup>2</sup>	<b>5 Karlovy Vary Region</b> Statutory city: Karlovy Vary No. of representatives: 45 Population: 303 165 Area: 3 314 km <sup>2</sup>	<b>8 Vysočina Region</b> Statutory city: Jihlava No. of representatives: 45 Population: 511 207 Area: 6 796 km <sup>2</sup>	<b>11 Olomouc Region</b> Statutory city: Olomouc No. of representatives: 55 Population: 638 638 Area: 5 267 km <sup>2</sup>	<b>14 Moravia-Silesia Region</b> Statutory city: Ostrava No. of representatives: 65 Population: 1 230 000 Area: 5 427 km <sup>2</sup>
<b>3 Liberec Region</b> Statutory city: Liberec No. of representatives: 45 Population: 438 567 Area: 3 163 km <sup>2</sup>	<b>6 Plzeň Region</b> Statutory city: Plzeň No. of representatives: 45 Population: 571 709 Area: 7 561 km <sup>2</sup>	<b>9 Pardubice Region</b> Statutory city: Pardubice No. of representatives: 45 Population: 516 383 Area: 4 519 km <sup>2</sup>	<b>12 South Moravia Region</b> Statutory city: Brno No. of representatives: 65 Population: 1 169 000 Area: 7 195 km <sup>2</sup>	

# HISTORY



Evžen Tošenovský was elected as Chairman of the Association (in office till 2004)

1/2000

Foundation of regions as higher self-governing territorial units.

6/2001

Foundation of the Association of Regions of the Czech Republic.– founding members:

Karlovy Vary Region, Liberec Region, Moravia-Silesia Region, Pardubice Region, Ústí Region, Vysočina Region and Zlín Region.

9/2001

The following joined the Association:

South Bohemia Region, Hradec Králové Region, Olomouc Region, Plzeň Region and Central Bohemia Region.

6/2002

The following joined the Association:

South Moravia Region.

3/2003

The following joined the Association:

City of Prague.



Evžen Tošenovský was elected as Chairman of the Association (in office till 2008)

12/2004



Michal Hašek was elected as Chairman of the Association (in office till 2012)

12/2008



Michal Hašek was elected as Chairman of the Association (in office till 2016)

12/2012





## President of the Czech Republic

The regular meeting with the President of the Czech Republic is the most important event for the Association.



## Prime Minister of the Czech Republic

Negotiations with the Prime Minister form a vital part of the Association's activities.



## Senate of the Parliament of the Czech Republic

Annual working lunch with the President of the Senate.



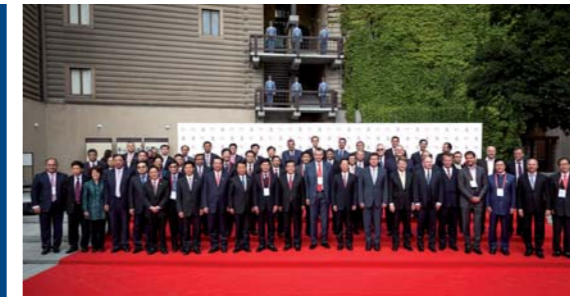
## Diplomatic corps

Traditional meetings with diplomats.



## International cooperation

Active participation in international conferences and entering into interregional relations with foreign subjects.



## Professional and interest organizations

The Association cooperates with the Union of Towns and Municipalities of the Czech Republic.



## Professional and interest organizations

The Czech Chamber of Commerce, Agricultural Chamber of the Czech Republic and Federation of the Food and Drink Industries of the Czech Republic number among the traditional partners of the Association.





# BOARD AND BUREAU OF THE ASSOCIATION

The Board of **the Association of Regions of the Czech Republic** is the top body for the whole organization.

Each member region is entitled to delegate its governor to the Board of the Association. The Board selects a Chairman and Vice-Chair or Vice-Chairs from among its ranks. The Chairman convenes and presides over the Board and represents the Association externally.

The Bureau carries out the decisions taken and acts as the support staff for the bodies of the association. The Bureau is headed by a director who answers to the Board and to the Chairman of the Association.

The Board can establish expert advisory bodies, committees, while taking into account current needs and professional implementation of the activities of Board members, for example the committee for transport, the public health committee, the social affairs committee or the education committee.

